



NCKX6 Polyclonal Antibody

Catalog No	YP-Ab-16481
Isotype	IgG
Reactivity	Human;Rat;Mouse;
Applications	WB;IHC;IF;ELISA
Gene Name	SLC24A6
Protein Name	Sodium/potassium/calcium exchanger 6
Immunogen	The antiserum was produced against synthesized peptide derived from human SLC24A6. AA range:494-543
Specificity	NCKX6 Polyclonal Antibody detects endogenous levels of NCKX6 protein.
Formulation	Liquid in PBS containing 50% glycerol, 0.5% BSA and 0.02% sodium azide.
Source	Polyclonal, Rabbit,IgG
Purification	The antibody was affinity-purified from rabbit antiserum by affinity-chromatography using epitope-specific immunogen.
Dilution	WB: 1/500 - 1/2000. ELISA: 1/20000.. IF 1:50-200
Concentration	1 mg/ml
Purity	≥90%
Storage Stability	-20°C/1 year
Synonyms	SLC24A6; NCKX6; NCLX; Sodium/potassium/calcium exchanger 6; Na(+)/K(+)/Ca(2+)-exchange protein 6; Solute carrier family 24 member 6
Observed Band	60kD
Cell Pathway	Mitochondrion inner membrane ; Multi-pass membrane protein .
Tissue Specificity	Present in pancreatic beta-cells (at protein level).
Function	function:Transports Ca(2+) in exchange for either Li(+) or Na(+), explaining how Li(+) catalyzes Ca(2+) exchange. In contrast to other members of the family its function is independent of K(+).,miscellaneous:Strongly inhibited by zinc.,similarity:Belongs to the sodium/potassium/calcium exchanger family. SLC24A subfamily.,
Background	SLC24A6 belongs to a family of potassium-dependent sodium/calcium exchangers that maintain cellular calcium homeostasis through the electrogenic countertransport of 4 sodium ions for 1 calcium ion and 1 potassium ion (Cai and Lytton, 2004 [PubMed 14625281]).[supplied by OMIM, Mar 2008],
matters needing attention	Avoid repeated freezing and thawing!

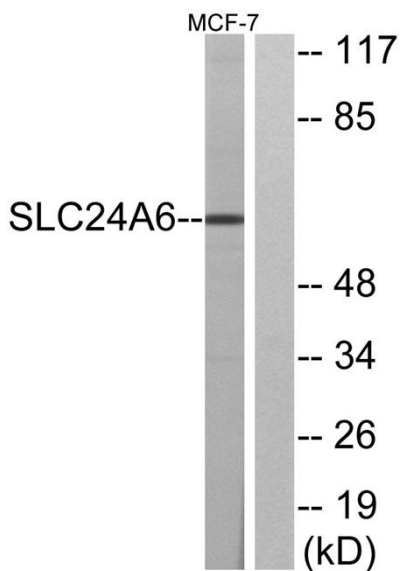


Usage suggestions

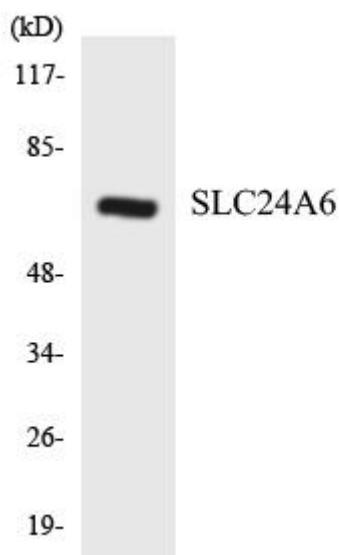
This product can be used in immunological reaction related experiments. For more information, please consult technical personnel.



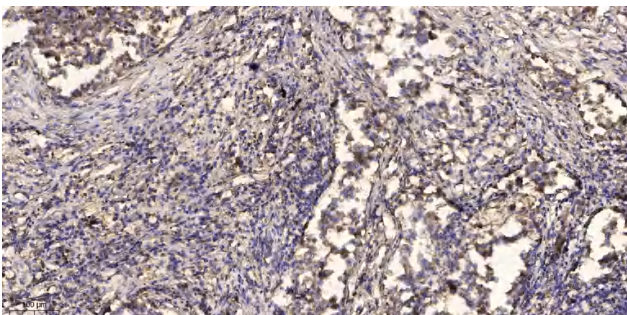
Products Images



Western blot analysis of lysates from MCF-7 cells, using SLC24A6 Antibody. The lane on the right is blocked with the synthesized peptide.



Western blot analysis of the lysates from HeLa cells using SLC24A6 antibody.



Immunohistochemical analysis of paraffin-embedded human Squamous cell carcinoma of lung. 1, Antibody was diluted at 1:200(4° overnight). 2, Tris-EDTA,pH9.0 was used for antigen retrieval. 3,Secondary antibody was diluted at 1:200(room temperature, 45min).